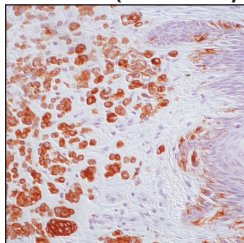
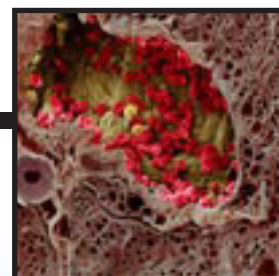
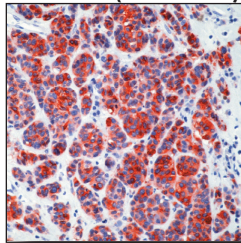


Immunohistochemistry Antibodies *for Melanoma*

MART-1 (Mob 276)

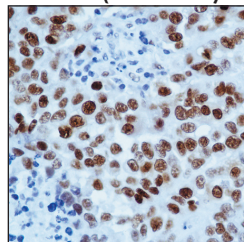


MART-1 (Mob 277)

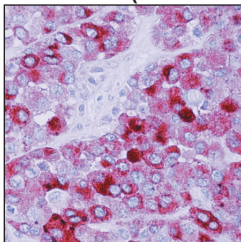


M e l a n o m a

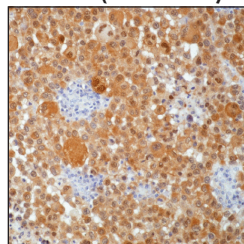
MiTf (Mob 351)



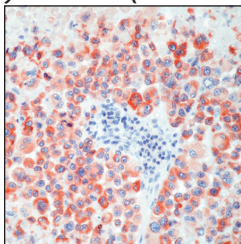
Melanoma (Mob 079)



S100 (Mob 377)



Tyrosinase (Mob 290)



1020 Serpentine Lane, Suite 111
Pleasanton CA 94566
T: 925.484.3350 | F: 925.484.3390
www.dbiosys.com

Immunohistochemistry Antibodies ^{for} *Melanoma*

Melanoma is the deadliest type of skin cancer which develops when melanocytes (pigment cells) turn malignant. Risk factors for melanoma include exposure to ultraviolet light, fair skin, familial history of melanoma and appearance of unusual moles on the skin or dysplastic nevi. It is the fifth most common cancer in American males (5%) and sixth most common cancer in American females (4%). If diagnosed early survival expectancy is very high.

Diagnostic BioSystems brings you following state of the art antibodies for your studies on important melanoma tumor markers.

ANTIBODY	CLONE	CATALOG # CONC.	CATALOG # PREDILUTED
MART-1	M2-7C10 + M2-9E3	Mob 276	—
MART-1	A103	Mob 277	—
Melanoma	HMB45	Mob 079	PDM 011
Melanoma	PNL2	Mob 421	—
Microphthalmia	C5+D5	Mob 351	—
S-100	Polyclonal	RP 035	PDR 088
S-100	SH-B1	Mob 111	PDM 088
S-100	4C4.9	Mob 377	—
Tyrosinase	Polyclonal	RP 132	—
Tyrosinase	T311	Mob 290	—



**Diagnostic
BioSystems**

1020 Serpentine Lane, Suite 111
Pleasanton CA 94566
T: 925.484.3350 | F: 925.484.3390
www.dbiosys.com